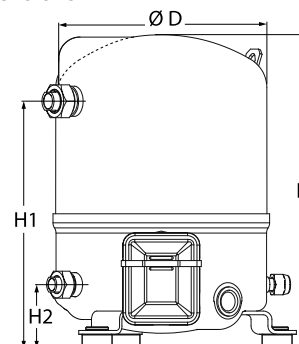


General Characteristics

Model number (on compressor nameplate)		NTZ048A4LR1B
Code number for Singlepack*		120F0226
Code number for Industrial pack**		120F0227
Drawing number		8501026f
Suction and discharge connections		Rotolock
Suction connection		1-1/4 " Rotolock
Discharge connection		1 " Rotolock
Suction connection with supplied sleeve		5/8 " ODF
Discharge connection with supplied sleeve		1/2 " ODF
Oil sight glass		Threaded
Oil equalisation connection		3/8" flare SAE
Oil drain connection		None
LP gauge port		Schrader
IPR valve		None
Cylinders	1	
Swept volume	48 cm ³ /rev	
Displacement @ Nominal speed	8.3 m ³ /h @ 2900 rpm - 10.1 m ³ /h @ 3500 rpm	
Net weight	21 kg	
Oil charge	0.95 litre, POE - 175PZ	
Maximum system test pressure Low Side / High side	25 bar(g) / 30 bar(g)	
Maximum differential test pressure	30 bar	
Maximum number of starts per hour	12	
Refrigerant charge limit	2.5 kg	
Approved refrigerants	R404A, R452A	

Dimensions


D=224 mm

H=333 mm

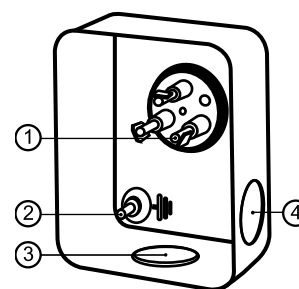
H1=263 mm

H2=68 mm

H3= mm

Electrical Characteristics

Nominal voltage	380-400V/3/50Hz - 460V/3/60Hz
Voltage range	340-440 V @ 50Hz - 414-506 V @ 60Hz
Winding resistance (between phases) +/- 7% at 25°C	11.55 Ω
Maximum Continuous Current (MCC)	4.8 A
Locked Rotor Amps (LRA)	16 A
Motor protection	Internal overload protector

Terminal box


IP55 (with cable gland)

1: Spade connectors 1/4"

2: Earth M4-12

3: Knock-out Ø 21 mm (0.83")

4: Hole Ø 21 mm (0.83")

Recommended Installation torques

Oil sight glass	50 Nm
Power connections / Earth connection	2 Nm / 2 Nm
Mounting bolts	15 Nm

Parts shipped with compressor

Mounting kit with grommets, bolts, nuts, sleeves and washers
Suction & Discharge solder sleeves, rotolock nuts and gaskets (shipped with rotolock version only)
Initial oil charge
Installation instructions

Approvals : CE certified, -, -

*Singlepack: Compressor in cardboard box

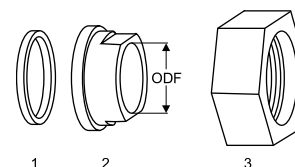
**Industrial pack: 12 Unboxed compressors on pallet (order per multiples of 12)

Rotolock accessories, suction side

Code no.

Solder sleeve, P09 (1-1/4" Rotolock, 5/8" ODF)	8153011
Angle adapter, C09 (1-1/4" Rotolock, 5/8" ODF)	8168009
Rotolock valve, V09 (1-1/4" Rotolock, 5/8" ODF)	8168033
Gasket, 1-1/4"	8156131

Gaskets, sleeves and nuts



- 1: Gasket
2: Solder sleeve
3: Rotolock nut

Rotolock accessories, discharge side

Code no.

Solder sleeve, P06 (1" Rotolock, 1/2" ODF)	8153007
Angle adapter, C06 (1" Rotolock, 1/2" ODF)	8168007
Rotolock valve, V06 (1" Rotolock, 1/2" ODF)	8168031
Gasket, 1"	8156130

Rotolock accessories, sets

Code no.

Angle adapter set, C09 (1-1/4"~5/8"), C06 (1"~1/2")	7703012
Valve set, V09 (1-1/4"~5/8"), V06 (1"~1/2")	7703005
Gasket set, 1", 1-1/4", 1-3/4", OSG gaskets black & white	8156009

Oil / lubricants

Code no.

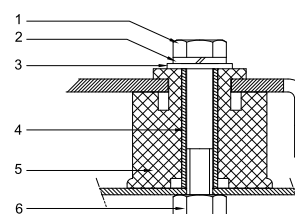
POE lubricant, 175PZ, 1 litre can	120Z0638
POE lubricant, 175PZ, 2.5 litre can	120Z0639

Crankcase heaters

Code no.

PTC heater 27W, CE mark, UL	120Z0459
Belt type crankcase heater, 54 W, 230 V, CE mark, UL	7773106
Belt type crankcase heater, 54 W, 400 V, UL	7773013

Mounting kit



- 1: Bolt (3x)
2: Lock washer (3x)
3: Flat washer (3x)
4: Sleeve (3x)
5: Grommet (3x)
6: Nut (3x)

Miscellaneous accessories

Code no.

Acoustic hood for 1 cylinder compressor	120Z0575
Oil equalisation nut	8153127

Spare parts

Code no.

Mounting kit for 1 and 2 cylinder compressor, including 3 grommets, 3 bolts	8156001
Oil sight glass with gaskets (black & white)	8156019
Gasket for oil sight glass (black chloroprene)	8156145
Service kit for terminal box 80 x 96 mm, including 1 cover, 1 clamp	8156134

Datasheet, performance data

Maneurop reciprocating compressor. NTZ048-4

Performance data at 50 Hz, EN 12900 rating conditions, Suction temp. = 20 °C

R452A

Cond. temp. in °C (tc)	Evaporating temperature in °C (to)							
	-45	-40	-35	-30	-25	-20	-15	-10

Cooling capacity in W

30	-	-	1 284	1 782	2 382	3 094	3 928	4 893	-
35	-	-	1 122	1 583	2 138	2 797	3 571	4 468	-
40	-	-	965	1 389	1 900	2 507	3 221	4 051	-
45	-	-	-	1 201	1 669	2 225	2 879	3 642	-
50	-	-	-	-	1 444	1 949	2 545	3 242	-
55	-	-	-	-	-	1 681	2 219	2 851	-
60	-	-	-	-	-	-	-	-	-

Power input in W

30	-	-	821	969	1 113	1 253	1 389	1 520	-
35	-	-	809	973	1 135	1 295	1 452	1 608	-
40	-	-	790	972	1 153	1 334	1 514	1 694	-
45	-	-	-	962	1 163	1 367	1 571	1 778	-
50	-	-	-	-	1 165	1 391	1 622	1 855	-
55	-	-	-	-	-	1 406	1 663	1 925	-
60	-	-	-	-	-	-	-	-	-

Current consumption in A

30	-	-	1.88	2.03	2.19	2.36	2.55	2.74	-
35	-	-	1.87	2.03	2.21	2.41	2.62	2.84	-
40	-	-	1.85	2.03	2.24	2.46	2.69	2.94	-
45	-	-	-	2.02	2.26	2.51	2.77	3.05	-
50	-	-	-	-	2.26	2.55	2.85	3.16	-
55	-	-	-	-	-	2.58	2.93	3.28	-
60	-	-	-	-	-	-	-	-	-

Mass flow in kg/h

30	-	-	31	43	58	75	96	121	-
35	-	-	28	40	54	72	92	116	-
40	-	-	26	37	51	68	88	112	-
45	-	-	-	34	48	64	84	107	-
50	-	-	-	-	44	60	80	102	-
55	-	-	-	-	-	56	75	97	-
60	-	-	-	-	-	-	-	-	-

Coefficient of performance (C.O.P.)

30	-	-	1.56	1.84	2.14	2.47	2.83	3.22	-
35	-	-	1.39	1.63	1.88	2.16	2.46	2.78	-
40	-	-	1.22	1.43	1.65	1.88	2.13	2.39	-
45	-	-	-	1.25	1.43	1.63	1.83	2.05	-
50	-	-	-	-	1.24	1.40	1.57	1.75	-
55	-	-	-	-	-	1.20	1.33	1.48	-
60	-	-	-	-	-	-	-	-	-

Nominal performance at to = -35 °C, tc = 40 °C

Cooling capacity	965	W
Power input	790	W
Current consumption	1.85	A
Mass flow	26	kg/h
C.O.P.	1.22	

to: Evaporating temperature at dew point

tc: Condensing temperature at dew point

Rating conditions : Suction gas temp. = 20 °C , Subcooling = 0 K

Pressure switch settings

Maximum HP switch setting	27.7	bar(g)
Minimum LP switch setting	0.1	bar(g)
LP pump down setting	0.1	bar(g)

Sound power data

Sound power level		dB(A)
With acoustic hood		dB(A)

Tolerance according EN12900

Datasheet, performance data

Maneurop reciprocating compressor. NTZ048-4

Performance data at 50 Hz, EN 12900 rating conditions, Superheat = 10 K

R452A

Cond. temp. in °C (tc)	Evaporating temperature in °C (to)							
	-45	-40	-35	-30	-25	-20	-15	-10

Cooling capacity in W

30	-	795	1 175	1 650	2 232	2 932	3 763	4 736	-
35	-	662	1 010	1 444	1 977	2 621	3 389	4 293	-
40	-	535	851	1 245	1 731	2 320	3 024	3 858	-
45	-	-	700	1 055	1 493	2 027	2 669	3 434	-
50	-	-	-	872	1 264	1 743	2 324	3 020	-
55	-	-	-	699	1 043	1 468	1 987	2 614	-
60	-	-	-	-	-	-	-	-	-

Power input in W

30	-	670	821	969	1 113	1 253	1 389	1 520	-
35	-	644	809	973	1 135	1 295	1 452	1 608	-
40	-	609	790	972	1 153	1 334	1 514	1 694	-
45	-	-	762	962	1 163	1 367	1 571	1 778	-
50	-	-	-	942	1 165	1 391	1 622	1 855	-
55	-	-	-	908	1 154	1 406	1 663	1 925	-
60	-	-	-	-	-	-	-	-	-

Current consumption in A

30	-	1.75	1.88	2.03	2.19	2.36	2.55	2.74	-
35	-	1.72	1.87	2.03	2.21	2.41	2.62	2.84	-
40	-	1.68	1.85	2.03	2.24	2.46	2.69	2.94	-
45	-	-	1.81	2.02	2.26	2.51	2.77	3.05	-
50	-	-	-	1.99	2.26	2.55	2.85	3.16	-
55	-	-	-	1.95	2.26	2.58	2.93	3.28	-
60	-	-	-	-	-	-	-	-	-

Mass flow in kg/h

30	-	26	37	51	67	86	108	133	-
35	-	23	34	48	63	82	103	128	-
40	-	20	31	44	60	78	99	123	-
45	-	-	28	41	56	74	94	118	-
50	-	-	-	37	52	69	89	112	-
55	-	-	-	33	48	65	84	107	-
60	-	-	-	-	-	-	-	-	-

Coefficient of performance (C.O.P.)

30	-	1.19	1.43	1.70	2.01	2.34	2.71	3.12	-
35	-	1.03	1.25	1.48	1.74	2.02	2.33	2.67	-
40	-	0.88	1.08	1.28	1.50	1.74	2.00	2.28	-
45	-	-	0.92	1.10	1.28	1.48	1.70	1.93	-
50	-	-	-	0.93	1.08	1.25	1.43	1.63	-
55	-	-	-	0.77	0.90	1.04	1.20	1.36	-
60	-	-	-	-	-	-	-	-	-

Nominal performance at to = -35 °C, tc = 40 °C

Cooling capacity	851	W
Power input	790	W
Current consumption	1.85	A
Mass flow	31	kg/h
C.O.P.	1.08	

to: Evaporating temperature at dew point

tc: Condensing temperature at dew point

Rating conditions : Superheat = 10 K , Subcooling = 0 K

Pressure switch settings

Maximum HP switch setting	27.7	bar(g)
Minimum LP switch setting	0.1	bar(g)
LP pump down setting	0.1	bar(g)

Sound power data

Sound power level		dB(A)
With acoustic hood		dB(A)

Tolerance according EN12900

Datasheet, performance data

Maneurop reciprocating compressor. NTZ048-4

Performance data at 50 Hz, EN 12900 rating conditions, Suction temp. = 20 °C

R404A

Cond. temp. in °C (tc)	Evaporating temperature in °C (to)							
	-45	-40	-35	-30	-25	-20	-15	-10

Cooling capacity in W

30	-	870	1 286	1 789	2 385	3 083	3 891	4 816	-
35	-	-	1 142	1 608	2 160	2 804	3 550	4 403	-
40	-	-	995	1 424	1 931	2 521	3 204	3 987	-
45	-	-	-	1 239	1 700	2 236	2 856	3 567	-
50	-	-	-	-	1 469	1 950	2 507	3 145	-
55	-	-	-	-	-	1 664	2 157	2 723	-
60	-	-	-	-	-	1 380	1 808	2 302	-

Power input in W

30	-	698	899	1 091	1 268	1 420	1 541	1 622	-
35	-	-	889	1 103	1 305	1 487	1 642	1 762	-
40	-	-	868	1 102	1 328	1 539	1 727	1 884	-
45	-	-	-	1 087	1 336	1 574	1 794	1 986	-
50	-	-	-	-	1 328	1 592	1 842	2 069	-
55	-	-	-	-	-	1 591	1 869	2 129	-
60	-	-	-	-	-	1 568	1 874	2 166	-

Current consumption in A

30	-	1.92	2.09	2.28	2.48	2.67	2.84	3.00	-
35	-	-	2.09	2.30	2.52	2.75	2.96	3.16	-
40	-	-	2.08	2.31	2.56	2.81	3.07	3.31	-
45	-	-	-	2.30	2.58	2.87	3.16	3.45	-
50	-	-	-	-	2.58	2.90	3.23	3.56	-
55	-	-	-	-	-	2.92	3.28	3.65	-
60	-	-	-	-	-	2.92	3.31	3.73	-

Mass flow in kg/h

30	-	21	31	43	58	75	96	120	-
35	-	-	29	41	55	73	93	116	-
40	-	-	27	39	53	69	89	112	-
45	-	-	-	36	50	66	85	107	-
50	-	-	-	-	46	62	80	102	-
55	-	-	-	-	-	58	75	96	-
60	-	-	-	-	-	53	70	90	-

Coefficient of performance (C.O.P.)

30	-	1.25	1.43	1.64	1.88	2.17	2.52	2.97	-
35	-	-	1.28	1.46	1.66	1.89	2.16	2.50	-
40	-	-	1.15	1.29	1.45	1.64	1.86	2.12	-
45	-	-	-	1.14	1.27	1.42	1.59	1.80	-
50	-	-	-	-	1.11	1.22	1.36	1.52	-
55	-	-	-	-	-	1.05	1.15	1.28	-
60	-	-	-	-	-	0.88	0.96	1.06	-

Nominal performance at to = -35 °C, tc = 40 °C

Cooling capacity	995	W
Power input	868	W
Current consumption	2.08	A
Mass flow	27	kg/h
C.O.P.	1.15	



to: Evaporating temperature at dew point
tc: Condensing temperature at dew point
Rating conditions : Suction gas temp. = 20 °C , Subcooling = 0 K

Pressure switch settings

Maximum HP switch setting	27.7	bar(g)
Minimum LP switch setting	0.1	bar(g)
LP pump down setting	0.1	bar(g)

Sound power data

Sound power level	70	dB(A)
With acoustic hood	60	dB(A)

Tolerance according EN12900

Datasheet, performance data

Maneurop reciprocating compressor. NTZ048-4

Performance data at 50 Hz, EN 12900 rating conditions, Superheat = 10 K

R404A

Cond. temp. in °C (tc)	Evaporating temperature in °C (to)							
	-45	-40	-35	-30	-25	-20	-15	-10

Cooling capacity in W

30	466	774	1 160	1 636	2 211	2 896	3 700	4 635	-
35	371	655	1 010	1 445	1 972	2 600	3 340	4 202	-
40	278	538	860	1 255	1 732	2 303	2 977	3 766	-
45	189	423	712	1 065	1 493	2 006	2 614	3 329	-
50	-	312	568	879	1 257	1 711	2 252	2 893	-
55	-	-	429	698	1 024	1 419	1 893	2 458	-
60	-	-	298	523	797	1 132	1 537	2 025	-

Power input in W

30	497	698	899	1 091	1 268	1 420	1 541	1 622	-
35	457	671	889	1 103	1 305	1 487	1 642	1 762	-
40	410	635	868	1 102	1 328	1 539	1 727	1 884	-
45	353	588	835	1 087	1 336	1 574	1 794	1 986	-
50	-	528	789	1 058	1 328	1 592	1 842	2 069	-
55	-	-	727	1 012	1 302	1 591	1 869	2 129	-
60	-	-	648	947	1 257	1 568	1 874	2 166	-

Current consumption in A

30	1.76	1.92	2.09	2.28	2.48	2.67	2.84	3.00	-
35	1.73	1.90	2.09	2.30	2.52	2.75	2.96	3.16	-
40	1.69	1.87	2.08	2.31	2.56	2.81	3.07	3.31	-
45	1.64	1.83	2.05	2.30	2.58	2.87	3.16	3.45	-
50	-	1.78	2.01	2.28	2.58	2.90	3.23	3.56	-
55	-	-	1.96	2.25	2.57	2.92	3.28	3.65	-
60	-	-	1.88	2.19	2.54	2.92	3.31	3.73	-

Mass flow in kg/h

30	16	26	38	52	68	87	108	133	-
35	14	24	35	49	65	83	104	128	-
40	11	21	33	46	62	80	100	123	-
45	8	18	30	43	58	76	95	118	-
50	-	15	26	39	54	71	90	112	-
55	-	-	23	35	50	66	85	106	-
60	-	-	19	31	45	61	79	100	-

Coefficient of performance (C.O.P.)

30	0.94	1.11	1.29	1.50	1.74	2.04	2.40	2.86	-
35	0.81	0.98	1.14	1.31	1.51	1.75	2.03	2.38	-
40	0.68	0.85	0.99	1.14	1.30	1.50	1.72	2.00	-
45	0.53	0.72	0.85	0.98	1.12	1.27	1.46	1.68	-
50	-	0.59	0.72	0.83	0.95	1.07	1.22	1.40	-
55	-	-	0.59	0.69	0.79	0.89	1.01	1.15	-
60	-	-	0.46	0.55	0.63	0.72	0.82	0.94	-

Nominal performance at to = -35 °C, tc = 40 °C

Cooling capacity	860	W
Power input	868	W
Current consumption	2.08	A
Mass flow	33	kg/h
C.O.P.	0.99	

to: Evaporating temperature at dew point

tc: Condensing temperature at dew point

Rating conditions : Superheat = 10 K , Subcooling = 0 K

Pressure switch settings

Maximum HP switch setting	27.7	bar(g)
Minimum LP switch setting	0.1	bar(g)
LP pump down setting	0.1	bar(g)

Sound power data

Sound power level	70	dB(A)
With acoustic hood	60	dB(A)

Tolerance according EN12900

Datasheet, performance data
Maneurop reciprocating compressor. NTZ048-4
Performance data at 60 Hz, EN 12900 rating conditions, Suction temp. = 20 °C
R404A

Cond. temp. in °C (tc)	Evaporating temperature in °C (to)							
	-45	-40	-35	-30	-25	-20	-15	-10

Cooling capacity in W

30	-	1 048	1 547	2 148	2 862	3 697	4 664	5 770	-
35	-	-	1 369	1 929	2 592	3 367	4 264	5 292	-
40	-	-	1 189	1 706	2 317	3 030	3 857	4 805	-
45	-	-	-	1 481	2 038	2 689	3 443	4 310	-
50	-	-	-	-	1 759	2 345	3 026	3 810	-
55	-	-	-	-	-	2 001	2 607	3 307	-
60	-	-	-	-	-	1 660	2 190	2 804	-

Power input in W

30	-	837	1 084	1 316	1 525	1 701	1 833	1 914	-
35	-	-	1 075	1 333	1 570	1 778	1 945	2 064	-
40	-	-	1 055	1 338	1 604	1 843	2 046	2 203	-
45	-	-	-	1 327	1 621	1 892	2 131	2 326	-
50	-	-	-	-	1 618	1 921	2 194	2 429	-
55	-	-	-	-	-	1 924	2 232	2 505	-
60	-	-	-	-	-	1 896	2 240	2 552	-

Current consumption in A

30	-	1.82	2.01	2.19	2.35	2.53	2.72	2.95	-
35	-	-	2.01	2.22	2.42	2.62	2.83	3.08	-
40	-	-	1.99	2.24	2.48	2.71	2.96	3.23	-
45	-	-	-	2.24	2.52	2.80	3.08	3.39	-
50	-	-	-	-	2.54	2.87	3.20	3.54	-
55	-	-	-	-	-	2.91	3.29	3.68	-
60	-	-	-	-	-	2.92	3.36	3.80	-

Mass flow in kg/h

30	-	25	37	52	70	90	115	144	-
35	-	-	35	49	67	87	111	139	-
40	-	-	32	46	63	83	107	135	-
45	-	-	-	43	60	79	102	129	-
50	-	-	-	-	55	74	97	123	-
55	-	-	-	-	-	69	91	117	-
60	-	-	-	-	-	64	85	110	-

Coefficient of performance (C.O.P.)

30	-	1.25	1.43	1.63	1.88	2.17	2.54	3.02	-
35	-	-	1.27	1.45	1.65	1.89	2.19	2.56	-
40	-	-	1.13	1.28	1.44	1.64	1.88	2.18	-
45	-	-	-	1.12	1.26	1.42	1.62	1.85	-
50	-	-	-	-	1.09	1.22	1.38	1.57	-
55	-	-	-	-	-	1.04	1.17	1.32	-
60	-	-	-	-	-	0.88	0.98	1.10	-

Nominal performance at to = -35 °C, tc = 40 °C

Cooling capacity	1 189	W
Power input	1 055	W
Current consumption	1.99	A
Mass flow	32	kg/h
C.O.P.	1.13	

to: Evaporating temperature at dew point

tc: Condensing temperature at dew point

Rating conditions : Suction gas temp. = 20 °C , Subcooling = 0 K

Pressure switch settings

Maximum HP switch setting	27.7	bar(g)
Minimum LP switch setting	0.1	bar(g)
LP pump down setting	0.1	bar(g)

Sound power data

Sound power level	73	dB(A)
With acoustic hood	63	dB(A)

Tolerance according EN12900

Datasheet, performance data

Maneurop reciprocating compressor. NTZ048-4

Performance data at 60 Hz, EN 12900 rating conditions, Superheat = 10 K

R404A

Cond. temp. in °C (tc)	Evaporating temperature in °C (to)							
	-45	-40	-35	-30	-25	-20	-15	-10

Cooling capacity in W

30	563	932	1 395	1 965	2 653	3 472	4 435	5 553	-
35	445	786	1 211	1 734	2 367	3 122	4 012	5 050	-
40	331	641	1 028	1 503	2 078	2 768	3 583	4 539	-
45	224	502	848	1 273	1 790	2 412	3 151	4 022	-
50	-	371	674	1 048	1 505	2 057	2 719	3 504	-
55	-	-	509	830	1 225	1 707	2 288	2 985	-
60	-	-	356	622	953	1 362	1 862	2 467	-

Power input in W

30	586	837	1 084	1 316	1 525	1 701	1 833	1 914	-
35	536	806	1 075	1 333	1 570	1 778	1 945	2 064	-
40	475	764	1 055	1 338	1 604	1 843	2 046	2 203	-
45	398	706	1 018	1 327	1 621	1 892	2 131	2 326	-
50	-	626	961	1 295	1 618	1 921	2 194	2 429	-
55	-	-	878	1 237	1 589	1 924	2 232	2 505	-
60	-	-	765	1 149	1 530	1 896	2 240	2 552	-

Current consumption in A

30	1.58	1.82	2.01	2.19	2.35	2.53	2.72	2.95	-
35	1.50	1.78	2.01	2.22	2.42	2.62	2.83	3.08	-
40	1.37	1.71	1.99	2.24	2.48	2.71	2.96	3.23	-
45	1.21	1.60	1.94	2.24	2.52	2.80	3.08	3.39	-
50	-	1.44	1.84	2.21	2.54	2.87	3.20	3.54	-
55	-	-	1.70	2.13	2.53	2.91	3.29	3.68	-
60	-	-	1.51	2.01	2.48	2.92	3.36	3.80	-

Mass flow in kg/h

30	19	31	45	62	81	104	130	159	-
35	17	28	42	59	78	100	125	154	-
40	13	25	39	55	74	96	121	149	-
45	10	22	35	51	70	91	115	143	-
50	-	18	31	47	65	86	109	136	-
55	-	-	27	42	60	80	103	129	-
60	-	-	22	37	54	73	96	121	-

Coefficient of performance (C.O.P.)

30	0.96	1.11	1.29	1.49	1.74	2.04	2.42	2.90	-
35	0.83	0.97	1.13	1.30	1.51	1.76	2.06	2.45	-
40	0.70	0.84	0.97	1.12	1.30	1.50	1.75	2.06	-
45	0.56	0.71	0.83	0.96	1.10	1.27	1.48	1.73	-
50	-	0.59	0.70	0.81	0.93	1.07	1.24	1.44	-
55	-	-	0.58	0.67	0.77	0.89	1.03	1.19	-
60	-	-	0.47	0.54	0.62	0.72	0.83	0.97	-

Nominal performance at to = -35 °C, tc = 40 °C

Cooling capacity	1 028	W
Power input	1 055	W
Current consumption	1.99	A
Mass flow	39	kg/h
C.O.P.	0.97	

Pressure switch settings

Maximum HP switch setting	27.7	bar(g)
Minimum LP switch setting	0.1	bar(g)
LP pump down setting	0.1	bar(g)

Sound power data

Sound power level	73	dB(A)
With acoustic hood	63	dB(A)

to: Evaporating temperature at dew point

tc: Condensing temperature at dew point

Rating conditions : Superheat = 10 K , Subcooling = 0 K

Tolerance according EN12900