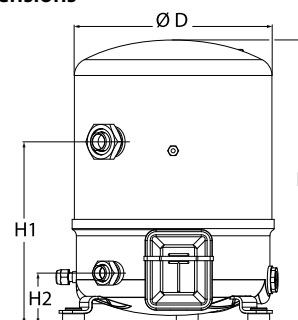


### General Characteristics

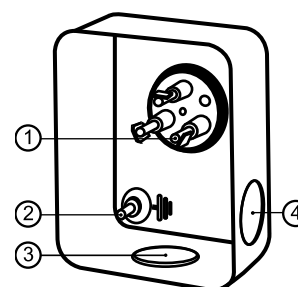
Model number (on compressor nameplate)		<b>NTZ096A4LR1B</b>
Code number for Singlepack*		120F0234
Code number for Industrial pack**		120F0235
Drawing number		8502012g
Suction and discharge connections		Rotolock
Suction connection		1-3/4" Rotolock
Discharge connection		1-1/4" Rotolock
Suction connection with supplied sleeve		7/8" ODF
Discharge connection with supplied sleeve		3/4" ODF
Oil sight glass		Threaded
Oil equalisation connection		3/8" flare SAE
Oil drain connection		None
LP gauge port		Schrader
IPR valve		30 bar / 8 bar
Cylinders	2	
Swept volume	96 cm <sup>3</sup> /rev	
Displacement @ Nominal speed	16.7 m <sup>3</sup> /h @ 2900 rpm - 20.2 m <sup>3</sup> /h @ 3500 rpm	
Net weight	35 kg	
Oil charge	1.8 litre, POE - 175PZ	
Maximum system test pressure Low Side / High side	25 bar(g) / 30 bar(g)	
Maximum differential test pressure	30 bar	
Maximum number of starts per hour	12	
Refrigerant charge limit	5 kg	
Approved refrigerants	R404A, R452A	

### Dimensions



D=288 mm  
H=413 mm  
H1=265 mm  
H2=74 mm  
H3=- mm

### Terminal box



IP55 (with cable gland)

- 1: Spade connectors 1/4"
- 2: Earth M4-12
- 3: Knock-out Ø 21 mm (0.83")
- 4: Hole Ø 21 mm (0.83")

### Electrical Characteristics

Nominal voltage	380-400V/3/50Hz - 460V/3/60Hz
Voltage range	340-440 V @ 50Hz - 414-506 V @ 60Hz
Winding resistance (between phases) +/- 7% at 25°C	5.03 Ω
Maximum Continuous Current (MCC)	10.1 A
Locked Rotor Amps (LRA)	32 A
Motor protection	Internal overload protector

### Recommended Installation torques

Oil sight glass	50 Nm
Power connections / Earth connection	2 Nm / 2 Nm
Mounting bolts	15 Nm

### Parts shipped with compressor

Mounting kit with grommets, bolts, nuts, sleeves and washers
Suction & Discharge solder sleeves, rotolock nuts and gaskets (shipped with rotolock version only)
Initial oil charge
Installation instructions

**Approvals** : CE certified, -, -

\*Singlepack: Compressor in cardboard box

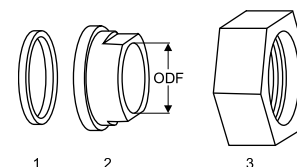
\*\*Industrial pack: 6 Unboxed compressors on pallet (order per multiples of 6)

**Rotolock accessories, suction side**

**Code no.**

Solder sleeve, P07 (1-3/4" Rotolock, 7/8" ODF)	8153013
Angle adapter, C07 (1-3/4" Rotolock, 7/8" ODF)	8168008
Rotolock valve, V07 (1-3/4" Rotolock, 7/8" ODF)	8168032
Gasket, 1-3/4"	8156132

**Gaskets, sleeves and nuts**



- 1: Gasket  
2: Solder sleeve  
3: Rotolock nut

**Rotolock accessories, discharge side**

**Code no.**

Solder sleeve, P04 (1-1/4" Rotolock, 3/4" ODF)	8153008
Angle adapter, C04 (1-1/4" Rotolock, 3/4" ODF)	8168006
Rotolock valve, V04 (1-1/4" Rotolock, 3/4" ODF)	8168029
Gasket, 1-1/4"	8156131

**Rotolock accessories, sets**

**Code no.**

Angle adapter set, C07 (1-3/4"~7/8"), C04 (1-1/4"~3/4")	7703013
Valve set, V07 (1-3/4"~7/8"), V04 (1-1/4"~3/4")	7703006
Gasket set, 1", 1-1/4", 1-3/4", OSG gaskets black & white	8156009

**Oil / lubricants**

**Code no.**

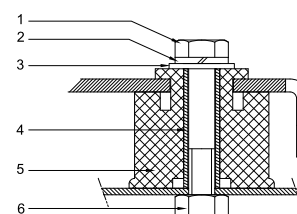
POE lubricant, 175PZ, 1 litre can	120Z0638
POE lubricant, 175PZ, 2.5 litre can	120Z0639

**Crankcase heaters**

**Code no.**

PTC heater 27W, CE mark, UL	120Z0459
Belt type crankcase heater, 65 W, 230 V, CE mark, UL	7773107
Belt type crankcase heater, 65 W, 400 V, CE mark, UL	7773117
Belt type crankcase heater, 65 W, 460 V, CE mark, UL	120Z0466

**Mounting kit**



- 1: Bolt (3x)  
2: Lock washer (3x)  
3: Flat washer (3x)  
4: Sleeve (3x)  
5: Grommet (3x)  
6: Nut (3x)

**Miscellaneous accessories**

**Code no.**

Acoustic hood for 2 cylinder compressor	120Z0472
Oil equalisation nut	8153127

**Spare parts**

**Code no.**

Mounting kit for 1 and 2 cylinder compressor, including 3 grommets, 3 bolts	8156001
Oil sight glass with gaskets (black & white)	8156019
Gasket for oil sight glass (black chloroprene)	8156145
Service kit for terminal box 80 x 96 mm, including 1 cover, 1 clamp	8156134

**Datasheet, performance data**
**Maneurop reciprocating compressor. NTZ096-4**
**Performance data at 50 Hz, EN 12900 rating conditions, Suction temp. = 20 °C**
**R452A**

Cond. temp. in °C (tc)	Evaporating temperature in °C (to)							
	-45	-40	-35	-30	-25	-20	-15	-10

**Cooling capacity in W**

30	-	-	2 639	3 611	4 803	6 233	7 921	9 883	-
35	-	-	2 352	3 250	4 357	5 690	7 269	9 111	-
40	-	-	2 065	2 886	3 904	5 136	6 603	8 321	-
45	-	-	-	2 523	3 448	4 576	5 926	7 516	-
50	-	-	-	-	2 993	4 013	5 243	6 701	-
55	-	-	-	-	-	3 451	4 558	5 881	-
60	-	-	-	-	-	-	-	-	-

**Power input in W**

30	-	-	1 678	1 974	2 262	2 531	2 768	2 964	-
35	-	-	1 670	1 994	2 320	2 637	2 933	3 197	-
40	-	-	1 650	2 001	2 363	2 725	3 076	3 405	-
45	-	-	-	1 994	2 389	2 794	3 197	3 589	-
50	-	-	-	-	2 399	2 843	3 297	3 748	-
55	-	-	-	-	-	2 875	3 375	3 883	-
60	-	-	-	-	-	-	-	-	-

**Current consumption in A**

30	-	-	3.30	3.67	4.05	4.42	4.76	5.05	-
35	-	-	3.27	3.67	4.09	4.52	4.93	5.31	-
40	-	-	3.25	3.67	4.13	4.62	5.11	5.57	-
45	-	-	-	3.66	4.17	4.71	5.27	5.83	-
50	-	-	-	-	4.18	4.78	5.41	6.06	-
55	-	-	-	-	-	4.82	5.53	6.26	-
60	-	-	-	-	-	-	-	-	-

**Mass flow in kg/h**

30	-	-	64	87	116	152	194	244	-
35	-	-	60	82	111	146	188	237	-
40	-	-	55	77	105	139	181	230	-
45	-	-	-	72	99	132	173	221	-
50	-	-	-	-	92	124	164	211	-
55	-	-	-	-	-	116	154	200	-
60	-	-	-	-	-	-	-	-	-

**Coefficient of performance (C.O.P.)**

30	-	-	1.57	1.83	2.12	2.46	2.86	3.33	-
35	-	-	1.41	1.63	1.88	2.16	2.48	2.85	-
40	-	-	1.25	1.44	1.65	1.89	2.15	2.44	-
45	-	-	-	1.27	1.44	1.64	1.85	2.09	-
50	-	-	-	-	1.25	1.41	1.59	1.79	-
55	-	-	-	-	-	1.20	1.35	1.51	-
60	-	-	-	-	-	-	-	-	-

**Nominal performance at to = -35 °C, tc = 40 °C**

Cooling capacity	2 065	W
Power input	1 650	W
Current consumption	3.25	A
Mass flow	55	kg/h
C.O.P.	1.25	

to: Evaporating temperature at dew point

tc: Condensing temperature at dew point

Rating conditions : Suction gas temp. = 20 °C , Subcooling = 0 K

**Pressure switch settings**

Maximum HP switch setting	27.7	bar(g)
Minimum LP switch setting	0.1	bar(g)
LP pump down setting	0.1	bar(g)

**Sound power data**

Sound power level	dB(A)
With acoustic hood	dB(A)

Tolerance according EN12900

# Datasheet, performance data

# Maneurop reciprocating compressor. NTZ096-4

## Performance data at 50 Hz, EN 12900 rating conditions, Superheat = 10 K

## R452A

Cond. temp. in °C (tc)	Evaporating temperature in °C (to)							
	-45	-40	-35	-30	-25	-20	-15	-10

### Cooling capacity in W

30	-	1 689	2 415	3 344	4 500	5 906	7 587	9 566	-
35	-	1 457	2 116	2 965	4 029	5 332	6 899	8 753	-
40	-	1 233	1 821	2 587	3 556	4 752	6 200	7 925	-
45	-	-	1 536	2 215	3 085	4 169	5 494	7 087	-
50	-	-	-	1 853	2 620	3 589	4 787	6 241	-
55	-	-	-	1 505	2 166	3 015	4 081	5 393	-
60	-	-	-	-	-	-	-	-	-

### Power input in W

30	-	1 386	1 678	1 974	2 262	2 531	2 768	2 964	-
35	-	1 358	1 670	1 994	2 320	2 637	2 933	3 197	-
40	-	1 322	1 650	2 001	2 363	2 725	3 076	3 405	-
45	-	-	1 620	1 994	2 389	2 794	3 197	3 589	-
50	-	-	-	1 974	2 399	2 843	3 297	3 748	-
55	-	-	-	1 941	2 393	2 875	3 375	3 883	-
60	-	-	-	-	-	-	-	-	-

### Current consumption in A

30	-	2.96	3.30	3.67	4.05	4.42	4.76	5.05	-
35	-	2.93	3.27	3.67	4.09	4.52	4.93	5.31	-
40	-	2.89	3.25	3.67	4.13	4.62	5.11	5.57	-
45	-	-	3.21	3.66	4.17	4.71	5.27	5.83	-
50	-	-	-	3.63	4.18	4.78	5.41	6.06	-
55	-	-	-	3.57	4.16	4.82	5.53	6.26	-
60	-	-	-	-	-	-	-	-	-

### Mass flow in kg/h

30	-	55	77	103	135	173	218	268	-
35	-	51	72	98	129	167	211	261	-
40	-	47	67	92	123	159	203	253	-
45	-	-	61	85	115	151	194	243	-
50	-	-	-	78	107	142	184	232	-
55	-	-	-	71	99	133	173	220	-
60	-	-	-	-	-	-	-	-	-

### Coefficient of performance (C.O.P.)

30	-	1.22	1.44	1.69	1.99	2.33	2.74	3.23	-
35	-	1.07	1.27	1.49	1.74	2.02	2.35	2.74	-
40	-	0.93	1.10	1.29	1.51	1.74	2.02	2.33	-
45	-	-	0.95	1.11	1.29	1.49	1.72	1.97	-
50	-	-	-	0.94	1.09	1.26	1.45	1.67	-
55	-	-	-	0.78	0.91	1.05	1.21	1.39	-
60	-	-	-	-	-	-	-	-	-

### Nominal performance at to = -35 °C, tc = 40 °C

Cooling capacity	1 821	W
Power input	1 650	W
Current consumption	3.25	A
Mass flow	67	kg/h
C.O.P.	1.10	

to: Evaporating temperature at dew point

tc: Condensing temperature at dew point

Rating conditions : Superheat = 10 K , Subcooling = 0 K

### Pressure switch settings

Maximum HP switch setting	27.7	bar(g)
Minimum LP switch setting	0.1	bar(g)
LP pump down setting	0.1	bar(g)

### Sound power data

Sound power level	dB(A)
With acoustic hood	dB(A)

Tolerance according EN12900

# Datasheet, performance data

# Maneurop reciprocating compressor. NTZ096-4

## Performance data at 50 Hz, EN 12900 rating conditions, Suction temp. = 20 °C

## R404A

Cond. temp. in °C (tc)	Evaporating temperature in °C (to)							
	-45	-40	-35	-30	-25	-20	-15	-10

### Cooling capacity in W

30	-	1 852	2 597	3 540	4 706	6 123	7 814	9 806	-
35	-	-	2 308	3 192	4 287	5 620	7 216	9 101	-
40	-	-	2 002	2 819	3 837	5 080	6 574	8 346	-
45	-	-	-	2 431	3 364	4 512	5 899	7 551	-
50	-	-	-	-	2 878	3 923	5 196	6 723	-
55	-	-	-	-	-	3 323	4 476	5 871	-
60	-	-	-	-	-	2 720	3 746	5 002	-

### Power input in W

30	-	1 478	1 789	2 092	2 384	2 660	2 916	3 146	-
35	-	-	1 773	2 120	2 469	2 815	3 152	3 477	-
40	-	-	1 734	2 119	2 517	2 925	3 337	3 750	-
45	-	-	-	2 089	2 531	2 994	3 475	3 968	-
50	-	-	-	-	2 511	3 024	3 566	4 133	-
55	-	-	-	-	-	3 016	3 613	4 248	-
60	-	-	-	-	-	2 974	3 619	4 314	-

### Current consumption in A

30	-	2.96	3.33	3.75	4.20	4.66	5.10	5.48	-
35	-	-	3.32	3.78	4.28	4.81	5.33	5.82	-
40	-	-	3.29	3.78	4.33	4.93	5.53	6.13	-
45	-	-	-	3.76	4.36	5.01	5.70	6.40	-
50	-	-	-	-	4.35	5.07	5.84	6.64	-
55	-	-	-	-	-	5.09	5.94	6.84	-
60	-	-	-	-	-	5.08	6.01	7.00	-

### Mass flow in kg/h

30	-	45	63	86	114	149	192	244	-
35	-	-	59	82	110	145	188	240	-
40	-	-	54	77	105	140	183	234	-
45	-	-	-	70	98	133	175	227	-
50	-	-	-	-	91	125	167	218	-
55	-	-	-	-	-	115	157	207	-
60	-	-	-	-	-	105	145	194	-

### Coefficient of performance (C.O.P.)

30	-	1.25	1.45	1.69	1.97	2.30	2.68	3.12	-
35	-	-	1.30	1.51	1.74	2.00	2.29	2.62	-
40	-	-	1.15	1.33	1.52	1.74	1.97	2.23	-
45	-	-	-	1.16	1.33	1.51	1.70	1.90	-
50	-	-	-	-	1.15	1.30	1.46	1.63	-
55	-	-	-	-	-	1.10	1.24	1.38	-
60	-	-	-	-	-	0.91	1.04	1.16	-

### Nominal performance at to = -35 °C, tc = 40 °C

Cooling capacity	2 002	W
Power input	1 734	W
Current consumption	3.29	A
Mass flow	54	kg/h
C.O.P.	1.15	



to: Evaporating temperature at dew point  
tc: Condensing temperature at dew point  
Rating conditions : Suction gas temp. = 20 °C , Subcooling = 0 K

### Pressure switch settings

Maximum HP switch setting	27.7	bar(g)
Minimum LP switch setting	0.1	bar(g)
LP pump down setting	0.1	bar(g)

### Sound power data

Sound power level	83.6	dB(A)
With acoustic hood	77.6	dB(A)

Tolerance according EN12900

# Datasheet, performance data

# Maneurop reciprocating compressor. NTZ096-4

## Performance data at 50 Hz, EN 12900 rating conditions, Superheat = 10 K

# R404A

Cond. temp. in °C (tc)	Evaporating temperature in °C (to)							
	-45	-40	-35	-30	-25	-20	-15	-10

### Cooling capacity in W

30	1 122	1 647	2 343	3 237	4 363	5 750	7 430	9 437	-
35	919	1 402	2 042	2 869	3 914	5 210	6 789	8 684	-
40	-	1 152	1 731	2 483	3 442	4 639	6 108	7 884	-
45	-	906	1 417	2 090	2 955	4 047	5 399	7 047	-
50	-	673	1 111	1 697	2 463	3 442	4 669	6 183	-
55	-	-	821	1 315	1 975	2 834	3 929	5 298	-
60	-	-	-	953	1 500	2 231	3 185	4 402	-

### Power input in W

30	1 165	1 478	1 789	2 092	2 384	2 660	2 916	3 146	-
35	1 099	1 431	1 773	2 120	2 469	2 815	3 152	3 477	-
40	-	1 367	1 734	2 119	2 517	2 925	3 337	3 750	-
45	-	1 289	1 673	2 089	2 531	2 994	3 475	3 968	-
50	-	1 198	1 594	2 033	2 511	3 024	3 566	4 133	-
55	-	-	1 498	1 954	2 462	3 016	3 613	4 248	-
60	-	-	-	1 854	2 384	2 974	3 619	4 314	-

### Current consumption in A

30	2.67	2.96	3.33	3.75	4.20	4.66	5.10	5.48	-
35	2.66	2.94	3.32	3.78	4.28	4.81	5.33	5.82	-
40	-	2.90	3.29	3.78	4.33	4.93	5.53	6.13	-
45	-	2.83	3.24	3.76	4.36	5.01	5.70	6.40	-
50	-	2.74	3.16	3.70	4.35	5.07	5.84	6.64	-
55	-	-	3.05	3.62	4.31	5.09	5.94	6.84	-
60	-	-	-	3.51	4.24	5.08	6.01	7.00	-

### Mass flow in kg/h

30	38	55	76	102	134	172	217	269	-
35	34	51	71	97	129	167	212	265	-
40	-	45	66	91	123	160	206	259	-
45	-	39	59	84	115	153	198	250	-
50	-	33	52	76	106	143	188	240	-
55	-	-	43	67	96	132	176	228	-
60	-	-	-	57	85	120	163	215	-

### Coefficient of performance (C.O.P.)

30	0.96	1.11	1.31	1.55	1.83	2.16	2.55	3.00	-
35	0.84	0.98	1.15	1.35	1.59	1.85	2.15	2.50	-
40	-	0.84	1.00	1.17	1.37	1.59	1.83	2.10	-
45	-	0.70	0.85	1.00	1.17	1.35	1.55	1.78	-
50	-	0.56	0.70	0.83	0.98	1.14	1.31	1.50	-
55	-	-	0.55	0.67	0.80	0.94	1.09	1.25	-
60	-	-	-	0.51	0.63	0.75	0.88	1.02	-

### Nominal performance at to = -35 °C, tc = 40 °C

Cooling capacity	1 731	W
Power input	1 734	W
Current consumption	3.29	A
Mass flow	66	kg/h
C.O.P.	1.00	

to: Evaporating temperature at dew point

tc: Condensing temperature at dew point

Rating conditions : Superheat = 10 K , Subcooling = 0 K

### Pressure switch settings

Maximum HP switch setting	27.7	bar(g)
Minimum LP switch setting	0.1	bar(g)
LP pump down setting	0.1	bar(g)

### Sound power data

Sound power level	83.6	dB(A)
With acoustic hood	77.6	dB(A)

Tolerance according EN12900

**Datasheet, performance data**
**Maneurop reciprocating compressor. NTZ096-4**
**Performance data at 60 Hz, EN 12900 rating conditions, Suction temp. = 20 °C**
**R404A**

Cond. temp. in °C (tc)	Evaporating temperature in °C (to)							
	-45	-40	-35	-30	-25	-20	-15	-10

**Cooling capacity in W**

30	-	2 258	3 271	4 485	5 919	7 595	9 531	11 748	-
35	-	-	2 840	3 993	5 353	6 941	8 777	10 881	-
40	-	-	2 395	3 482	4 765	6 262	7 993	9 980	-
45	-	-	-	2 961	4 161	5 563	7 186	9 051	-
50	-	-	-	-	3 549	4 851	6 362	8 101	-
55	-	-	-	-	-	4 135	5 529	7 138	-
60	-	-	-	-	-	3 421	4 694	6 169	-

**Power input in W**

30	-	1 739	2 167	2 575	2 947	3 266	3 514	3 676	-
35	-	-	2 130	2 598	3 045	3 452	3 803	4 082	-
40	-	-	2 062	2 587	3 104	3 596	4 047	4 440	-
45	-	-	-	2 537	3 122	3 696	4 243	4 746	-
50	-	-	-	-	3 096	3 749	4 389	4 999	-
55	-	-	-	-	-	3 751	4 480	5 194	-
60	-	-	-	-	-	3 699	4 515	5 329	-

**Current consumption in A**

30	-	2.92	3.33	3.75	4.18	4.62	5.06	5.51	-
35	-	-	3.34	3.82	4.31	4.80	5.29	5.78	-
40	-	-	3.30	3.85	4.41	4.96	5.52	6.07	-
45	-	-	-	3.82	4.46	5.10	5.73	6.36	-
50	-	-	-	-	4.45	5.19	5.91	6.62	-
55	-	-	-	-	-	5.21	6.04	6.86	-
60	-	-	-	-	-	5.16	6.11	7.05	-

**Mass flow in kg/h**

30	-	55	79	109	144	186	235	293	-
35	-	-	72	102	137	179	229	287	-
40	-	-	65	94	130	172	222	280	-
45	-	-	-	86	121	164	214	272	-
50	-	-	-	-	112	154	204	263	-
55	-	-	-	-	-	144	194	252	-
60	-	-	-	-	-	131	182	240	-

**Coefficient of performance (C.O.P.)**

30	-	1.30	1.51	1.74	2.01	2.33	2.71	3.20	-
35	-	-	1.33	1.54	1.76	2.01	2.31	2.67	-
40	-	-	1.16	1.35	1.54	1.74	1.98	2.25	-
45	-	-	-	1.17	1.33	1.50	1.69	1.91	-
50	-	-	-	-	1.15	1.29	1.45	1.62	-
55	-	-	-	-	-	1.10	1.23	1.37	-
60	-	-	-	-	-	0.92	1.04	1.16	-

**Nominal performance at to = -35 °C, tc = 40 °C**

Cooling capacity	2 395	W
Power input	2 062	W
Current consumption	3.30	A
Mass flow	65	kg/h
C.O.P.	1.16	

**Pressure switch settings**

Maximum HP switch setting	27.7	bar(g)
Minimum LP switch setting	0.1	bar(g)
LP pump down setting	0.1	bar(g)

**Sound power data**

Sound power level	84.2	dB(A)
With acoustic hood	77	dB(A)

to: Evaporating temperature at dew point

tc: Condensing temperature at dew point

Rating conditions : Suction gas temp. = 20 °C , Subcooling = 0 K

Tolerance according EN12900

# Datasheet, performance data

# Maneurop reciprocating compressor. NTZ096-4

## Performance data at 60 Hz, EN 12900 rating conditions, Superheat = 10 K

## R404A

Cond. temp. in °C (tc)	Evaporating temperature in °C (to)							
	-45	-40	-35	-30	-25	-20	-15	-10

### Cooling capacity in W

30	1 249	2 008	2 951	4 102	5 487	7 132	9 063	11 306	-
35	921	1 631	2 512	3 589	4 888	6 435	8 258	10 382	-
40	-	1 256	2 070	3 068	4 275	5 719	7 427	9 427	-
45	-	892	1 633	2 545	3 655	4 989	6 577	8 447	-
50	-	548	1 210	2 031	3 037	4 256	5 717	7 450	-
55	-	-	812	1 535	2 430	3 526	4 853	6 443	-
60	-	-	-	1 066	1 842	2 807	3 991	5 429	-

### Power input in W

30	1 308	1 739	2 167	2 575	2 947	3 266	3 514	3 676	-
35	1 193	1 656	2 130	2 598	3 045	3 452	3 803	4 082	-
40	-	1 545	2 062	2 587	3 104	3 596	4 047	4 440	-
45	-	1 402	1 958	2 537	3 122	3 696	4 243	4 746	-
50	-	1 226	1 818	2 447	3 096	3 749	4 389	4 999	-
55	-	-	1 636	2 312	3 023	3 751	4 480	5 194	-
60	-	-	-	2 131	2 899	3 699	4 515	5 329	-

### Current consumption in A

30	2.51	2.92	3.33	3.75	4.18	4.62	5.06	5.51	-
35	2.39	2.87	3.34	3.82	4.31	4.80	5.29	5.78	-
40	-	2.74	3.30	3.85	4.41	4.96	5.52	6.07	-
45	-	2.53	3.18	3.82	4.46	5.10	5.73	6.36	-
50	-	2.21	2.97	3.71	4.45	5.19	5.91	6.62	-
55	-	-	2.65	3.52	4.37	5.21	6.04	6.86	-
60	-	-	-	3.21	4.19	5.16	6.11	7.05	-

### Mass flow in kg/h

30	43	67	96	129	168	213	265	323	-
35	34	59	88	122	161	206	258	316	-
40	-	49	79	113	152	198	250	309	-
45	-	39	68	102	142	188	241	300	-
50	-	27	56	91	131	177	230	290	-
55	-	-	43	78	118	165	218	278	-
60	-	-	-	63	104	151	205	265	-

### Coefficient of performance (C.O.P.)

30	0.96	1.15	1.36	1.59	1.86	2.18	2.58	3.08	-
35	0.77	0.98	1.18	1.38	1.61	1.86	2.17	2.54	-
40	-	0.81	1.00	1.19	1.38	1.59	1.84	2.12	-
45	-	0.64	0.83	1.00	1.17	1.35	1.55	1.78	-
50	-	0.45	0.67	0.83	0.98	1.14	1.30	1.49	-
55	-	-	0.50	0.66	0.80	0.94	1.08	1.24	-
60	-	-	-	0.50	0.64	0.76	0.88	1.02	-

### Nominal performance at to = -35 °C, tc = 40 °C

Cooling capacity	2 070	W
Power input	2 062	W
Current consumption	3.30	A
Mass flow	79	kg/h
C.O.P.	1.00	

to: Evaporating temperature at dew point

tc: Condensing temperature at dew point

Rating conditions : Superheat = 10 K , Subcooling = 0 K

### Pressure switch settings

Maximum HP switch setting	27.7	bar(g)
Minimum LP switch setting	0.1	bar(g)
LP pump down setting	0.1	bar(g)

### Sound power data

Sound power level	84.2	dB(A)
With acoustic hood	77	dB(A)

Tolerance according EN12900