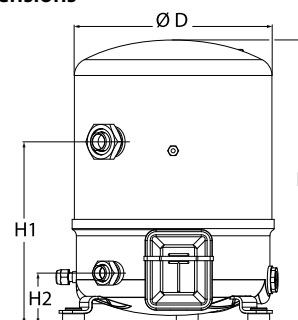


General Characteristics

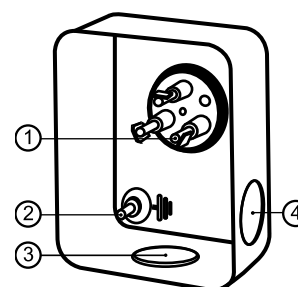
Model number (on compressor nameplate)		NTZ108A4LR1B
Code number for Singlepack*		120F0238
Code number for Industrial pack**		120F0239
Drawing number		8502012g
Suction and discharge connections		Rotolock
Suction connection		1-3/4" Rotolock
Discharge connection		1-1/4" Rotolock
Suction connection with supplied sleeve		7/8" ODF
Discharge connection with supplied sleeve		3/4" ODF
Oil sight glass		Threaded
Oil equalisation connection		3/8" flare SAE
Oil drain connection		None
LP gauge port		Schrader
IPR valve		30 bar / 8 bar
Cylinders	2	
Swept volume	108 cm ³ /rev	
Displacement @ Nominal speed	18.8 m ³ /h @ 2900 rpm - 22.7 m ³ /h @ 3500 rpm	
Net weight	35 kg	
Oil charge	1.8 litre, POE - 175PZ	
Maximum system test pressure Low Side / High side	25 bar(g) / 30 bar(g)	
Maximum differential test pressure	30 bar	
Maximum number of starts per hour	12	
Refrigerant charge limit	5 kg	
Approved refrigerants	R404A, R452A	

Dimensions



D=288 mm
H=413 mm
H1=265 mm
H2=74 mm
H3=- mm

Terminal box



IP55 (with cable gland)

- 1: Spade connectors 1/4"
- 2: Earth M4-12
- 3: Knock-out Ø 21 mm (0.83")
- 4: Hole Ø 21 mm (0.83")

Electrical Characteristics

Nominal voltage	380-400V/3/50Hz - 460V/3/60Hz
Voltage range	340-440 V @ 50Hz - 414-506 V @ 60Hz
Winding resistance (between phases) +/- 7% at 25°C	4 Ω
Maximum Continuous Current (MCC)	12.1 A
Locked Rotor Amps (LRA)	45 A
Motor protection	Internal overload protector

Recommended Installation torques

Oil sight glass	50 Nm
Power connections / Earth connection	2 Nm / 2 Nm
Mounting bolts	15 Nm

Parts shipped with compressor

Mounting kit with grommets, bolts, nuts, sleeves and washers
Suction & Discharge solder sleeves, rotolock nuts and gaskets (shipped with rotolock version only)
Initial oil charge
Installation instructions

Approvals : CE certified, -, -

*Singlepack: Compressor in cardboard box

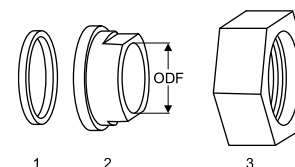
**Industrial pack: 6 Unboxed compressors on pallet (order per multiples of 6)

Rotolock accessories, suction side

Code no.

Solder sleeve, P07 (1-3/4" Rotolock, 7/8" ODF)	8153013
Angle adapter, C07 (1-3/4" Rotolock, 7/8" ODF)	8168008
Rotolock valve, V07 (1-3/4" Rotolock, 7/8" ODF)	8168032
Gasket, 1-3/4"	8156132

Gaskets, sleeves and nuts



- 1: Gasket
2: Solder sleeve
3: Rotolock nut

Rotolock accessories, discharge side

Code no.

Solder sleeve, P04 (1-1/4" Rotolock, 3/4" ODF)	8153008
Angle adapter, C04 (1-1/4" Rotolock, 3/4" ODF)	8168006
Rotolock valve, V04 (1-1/4" Rotolock, 3/4" ODF)	8168029
Gasket, 1-1/4"	8156131

Rotolock accessories, sets

Code no.

Angle adapter set, C07 (1-3/4"~7/8"), C04 (1-1/4"~3/4")	7703013
Valve set, V07 (1-3/4"~7/8"), V04 (1-1/4"~3/4")	7703006
Gasket set, 1", 1-1/4", 1-3/4", OSG gaskets black & white	8156009

Oil / lubricants

Code no.

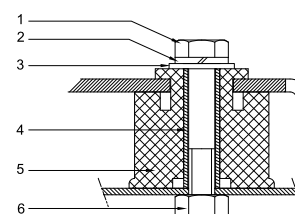
POE lubricant, 175PZ, 1 litre can	120Z0638
POE lubricant, 175PZ, 2.5 litre can	120Z0639

Crankcase heaters

Code no.

PTC heater 27W, CE mark, UL	120Z0459
Belt type crankcase heater, 65 W, 230 V, CE mark, UL	7773107
Belt type crankcase heater, 65 W, 400 V, CE mark, UL	7773117
Belt type crankcase heater, 65 W, 460 V, CE mark, UL	120Z0466

Mounting kit



- 1: Bolt (3x)
2: Lock washer (3x)
3: Flat washer (3x)
4: Sleeve (3x)
5: Grommet (3x)
6: Nut (3x)

Miscellaneous accessories

Code no.

Acoustic hood for 2 cylinder compressor	120Z0472
Oil equalisation nut	8153127

Spare parts

Code no.

Mounting kit for 1 and 2 cylinder compressor, including 3 grommets, 3 bolts	8156001
Oil sight glass with gaskets (black & white)	8156019
Gasket for oil sight glass (black chloroprene)	8156145
Service kit for terminal box 80 x 96 mm, including 1 cover, 1 clamp	8156134

Performance data at 50 Hz, EN 12900 rating conditions, Suction temp. = 20 °C
R452A

Cond. temp. in °C (tc)	Evaporating temperature in °C (to)							
	-45	-40	-35	-30	-25	-20	-15	-10

Cooling capacity in W

30	-	-	2 960	3 971	5 207	6 692	8 446	10 492	-
35	-	-	2 653	3 572	4 699	6 055	7 664	9 547	-
40	-	-	2 367	3 196	4 215	5 446	6 912	8 634	-
45	-	-	-	2 840	3 754	4 863	6 188	7 751	-
50	-	-	-	-	3 315	4 303	5 490	6 897	-
55	-	-	-	-	-	3 765	4 816	6 070	-
60	-	-	-	-	-	-	-	-	-

Power input in W

30	-	-	1 905	2 207	2 524	2 845	3 161	3 463	-
35	-	-	1 940	2 257	2 596	2 946	3 299	3 644	-
40	-	-	1 975	2 305	2 663	3 040	3 426	3 812	-
45	-	-	-	2 352	2 727	3 128	3 546	3 971	-
50	-	-	-	-	2 791	3 214	3 660	4 121	-
55	-	-	-	-	-	3 300	3 773	4 267	-
60	-	-	-	-	-	-	-	-	-

Current consumption in A

30	-	-	4.19	4.44	4.75	5.09	5.48	5.90	-
35	-	-	4.30	4.60	4.95	5.35	5.77	6.23	-
40	-	-	4.32	4.69	5.09	5.54	6.01	6.51	-
45	-	-	-	4.71	5.18	5.68	6.20	6.75	-
50	-	-	-	-	5.22	5.78	6.37	6.97	-
55	-	-	-	-	-	5.86	6.51	7.18	-
60	-	-	-	-	-	-	-	-	-

Mass flow in kg/h

30	-	-	71	96	126	163	207	259	-
35	-	-	67	91	120	155	198	249	-
40	-	-	63	86	114	148	189	238	-
45	-	-	-	81	108	140	180	227	-
50	-	-	-	-	102	133	171	217	-
55	-	-	-	-	-	126	163	207	-
60	-	-	-	-	-	-	-	-	-

Coefficient of performance (C.O.P.)

30	-	-	1.55	1.80	2.06	2.35	2.67	3.03	-
35	-	-	1.37	1.58	1.81	2.06	2.32	2.62	-
40	-	-	1.20	1.39	1.58	1.79	2.02	2.26	-
45	-	-	-	1.21	1.38	1.55	1.75	1.95	-
50	-	-	-	-	1.19	1.34	1.50	1.67	-
55	-	-	-	-	-	1.14	1.28	1.42	-
60	-	-	-	-	-	-	-	-	-

Nominal performance at to = -35 °C, tc = 40 °C

Cooling capacity	2 367	W
Power input	1 975	W
Current consumption	4.32	A
Mass flow	63	kg/h
C.O.P.	1.20	

to: Evaporating temperature at dew point

tc: Condensing temperature at dew point

Rating conditions : Suction gas temp. = 20 °C , Subcooling = 0 K

Pressure switch settings

Maximum HP switch setting	27.7	bar(g)
Minimum LP switch setting	0.1	bar(g)
LP pump down setting	0.1	bar(g)

Sound power data

Sound power level	dB(A)
With acoustic hood	dB(A)

Tolerance according EN12900

Datasheet, performance data

Maneurop reciprocating compressor. NTZ108-4

Performance data at 50 Hz, EN 12900 rating conditions, Superheat = 10 K

R452A

Cond. temp. in °C (tc)	Evaporating temperature in °C (to)							
	-45	-40	-35	-30	-25	-20	-15	-10

Cooling capacity in W

30	-	1 946	2 709	3 677	4 879	6 341	8 091	10 156	-
35	-	1 704	2 387	3 259	4 345	5 674	7 274	9 172	-
40	-	1 480	2 087	2 865	3 839	5 038	6 490	8 224	-
45	-	-	1 808	2 494	3 359	4 430	5 737	7 309	-
50	-	-	-	2 143	2 902	3 848	5 012	6 424	-
55	-	-	-	1 810	2 465	3 289	4 313	5 567	-
60	-	-	-	-	-	-	-	-	-

Power input in W

30	-	1 626	1 905	2 207	2 524	2 845	3 161	3 463	-
35	-	1 654	1 940	2 257	2 596	2 946	3 299	3 644	-
40	-	1 683	1 975	2 305	2 663	3 040	3 426	3 812	-
45	-	-	2 012	2 352	2 727	3 128	3 546	3 971	-
50	-	-	-	2 402	2 791	3 214	3 660	4 121	-
55	-	-	-	2 458	2 859	3 300	3 773	4 267	-
60	-	-	-	-	-	-	-	-	-

Current consumption in A

30	-	3.99	4.19	4.44	4.75	5.09	5.48	5.90	-
35	-	4.04	4.30	4.60	4.95	5.35	5.77	6.23	-
40	-	4.01	4.32	4.69	5.09	5.54	6.01	6.51	-
45	-	-	4.29	4.71	5.18	5.68	6.20	6.75	-
50	-	-	-	4.69	5.22	5.78	6.37	6.97	-
55	-	-	-	4.63	5.23	5.86	6.51	7.18	-
60	-	-	-	-	-	-	-	-	-

Mass flow in kg/h

30	-	64	86	114	147	186	232	285	-
35	-	60	81	108	140	178	222	273	-
40	-	56	77	102	132	169	212	262	-
45	-	-	72	96	125	161	202	250	-
50	-	-	-	91	119	153	192	239	-
55	-	-	-	86	112	145	183	228	-
60	-	-	-	-	-	-	-	-	-

Coefficient of performance (C.O.P.)

30	-	1.20	1.42	1.67	1.93	2.23	2.56	2.93	-
35	-	1.03	1.23	1.44	1.67	1.93	2.21	2.52	-
40	-	0.88	1.06	1.24	1.44	1.66	1.89	2.16	-
45	-	-	0.90	1.06	1.23	1.42	1.62	1.84	-
50	-	-	-	0.89	1.04	1.20	1.37	1.56	-
55	-	-	-	0.74	0.86	1.00	1.14	1.30	-
60	-	-	-	-	-	-	-	-	-

Nominal performance at to = -35 °C, tc = 40 °C

Cooling capacity	2 087	W
Power input	1 975	W
Current consumption	4.32	A
Mass flow	77	kg/h
C.O.P.	1.06	

to: Evaporating temperature at dew point

tc: Condensing temperature at dew point

Rating conditions : Superheat = 10 K , Subcooling = 0 K

Pressure switch settings

Maximum HP switch setting	27.7	bar(g)
Minimum LP switch setting	0.1	bar(g)
LP pump down setting	0.1	bar(g)

Sound power data

Sound power level	dB(A)
With acoustic hood	dB(A)

Tolerance according EN12900

Datasheet, performance data

Maneurop reciprocating compressor. NTZ108-4

Performance data at 50 Hz, EN 12900 rating conditions, Suction temp. = 20 °C

R404A

Cond. temp. in °C (tc)	Evaporating temperature in °C (to)							
	-45	-40	-35	-30	-25	-20	-15	-10

Cooling capacity in W

30	-	2 243	3 167	4 303	5 672	7 294	9 189	11 380	-
35	-	-	2 819	3 878	5 148	6 652	8 410	10 442	-
40	-	-	2 465	3 445	4 617	6 001	7 619	9 491	-
45	-	-	-	3 008	4 079	5 342	6 819	8 529	-
50	-	-	-	-	3 537	4 678	6 012	7 559	-
55	-	-	-	-	-	4 011	5 200	6 582	-
60	-	-	-	-	-	3 342	4 386	5 602	-

Power input in W

30	-	1 741	2 089	2 428	2 754	3 066	3 364	3 646	-
35	-	-	2 097	2 474	2 842	3 200	3 547	3 881	-
40	-	-	2 079	2 496	2 907	3 312	3 708	4 095	-
45	-	-	-	2 491	2 947	3 399	3 846	4 287	-
50	-	-	-	-	2 959	3 460	3 959	4 456	-
55	-	-	-	-	-	3 492	4 045	4 598	-
60	-	-	-	-	-	3 494	4 101	4 712	-

Current consumption in A

30	-	4.16	4.51	4.91	5.33	5.74	6.12	6.45	-
35	-	-	4.52	4.94	5.40	5.88	6.36	6.80	-
40	-	-	4.53	4.96	5.46	6.01	6.57	7.12	-
45	-	-	-	4.98	5.52	6.12	6.76	7.41	-
50	-	-	-	-	5.54	6.19	6.91	7.66	-
55	-	-	-	-	-	6.24	7.02	7.86	-
60	-	-	-	-	-	6.24	7.08	8.01	-

Mass flow in kg/h

30	-	54	77	104	138	178	227	284	-
35	-	-	72	99	132	172	219	275	-
40	-	-	67	94	126	165	211	266	-
45	-	-	-	87	119	157	202	256	-
50	-	-	-	-	111	149	193	245	-
55	-	-	-	-	-	139	182	233	-
60	-	-	-	-	-	129	170	220	-

Coefficient of performance (C.O.P.)

30	-	1.29	1.52	1.77	2.06	2.38	2.73	3.12	-
35	-	-	1.34	1.57	1.81	2.08	2.37	2.69	-
40	-	-	1.19	1.38	1.59	1.81	2.05	2.32	-
45	-	-	-	1.21	1.38	1.57	1.77	1.99	-
50	-	-	-	-	1.20	1.35	1.52	1.70	-
55	-	-	-	-	-	1.15	1.29	1.43	-
60	-	-	-	-	-	0.96	1.07	1.19	-

Nominal performance at to = -35 °C, tc = 40 °C

Cooling capacity	2 465	W
Power input	2 079	W
Current consumption	4.53	A
Mass flow	67	kg/h
C.O.P.	1.19	



to: Evaporating temperature at dew point
tc: Condensing temperature at dew point
Rating conditions : Suction gas temp. = 20 °C , Subcooling = 0 K

Pressure switch settings

Maximum HP switch setting	27.7	bar(g)
Minimum LP switch setting	0.1	bar(g)
LP pump down setting	0.1	bar(g)

Sound power data

Sound power level	82.3	dB(A)
With acoustic hood	75.3	dB(A)

Tolerance according EN12900

Datasheet, performance data

Maneurop reciprocating compressor. NTZ108-4

Performance data at 50 Hz, EN 12900 rating conditions, Superheat = 10 K

R404A

Cond. temp. in °C (tc)	Evaporating temperature in °C (to)							
	-45	-40	-35	-30	-25	-20	-15	-10

Cooling capacity in W

30	1 324	1 995	2 857	3 936	5 257	6 849	8 738	10 951	-
35	1 074	1 698	2 494	3 486	4 701	6 167	7 912	9 963	-
40	-	1 404	2 131	3 035	4 142	5 481	7 079	8 965	-
45	-	1 117	1 772	2 586	3 583	4 792	6 241	7 960	-
50	-	841	1 422	2 142	3 027	4 104	5 402	6 952	-
55	-	-	1 083	1 707	2 477	3 420	4 564	5 941	-
60	-	-	-	1 286	1 937	2 742	3 729	4 930	-

Power input in W

30	1 383	1 741	2 089	2 428	2 754	3 066	3 364	3 646	-
35	1 323	1 713	2 097	2 474	2 842	3 200	3 547	3 881	-
40	-	1 658	2 079	2 496	2 907	3 312	3 708	4 095	-
45	-	1 574	2 033	2 491	2 947	3 399	3 846	4 287	-
50	-	1 460	1 957	2 457	2 959	3 460	3 959	4 456	-
55	-	-	1 850	2 393	2 941	3 492	4 045	4 598	-
60	-	-	-	2 297	2 892	3 494	4 101	4 712	-

Current consumption in A

30	3.89	4.16	4.51	4.91	5.33	5.74	6.12	6.45	-
35	3.93	4.17	4.52	4.94	5.40	5.88	6.36	6.80	-
40	-	4.20	4.53	4.96	5.46	6.01	6.57	7.12	-
45	-	4.22	4.54	4.98	5.52	6.12	6.76	7.41	-
50	-	4.25	4.55	4.99	5.54	6.19	6.91	7.66	-
55	-	-	4.53	4.97	5.55	6.24	7.02	7.86	-
60	-	-	-	4.93	5.52	6.24	7.08	8.01	-

Mass flow in kg/h

30	44	67	93	124	161	205	255	313	-
35	39	61	87	118	155	198	247	304	-
40	-	55	81	112	147	189	238	293	-
45	-	48	74	104	139	180	228	282	-
50	-	41	66	96	130	171	217	270	-
55	-	-	57	86	120	160	205	257	-
60	-	-	-	76	109	148	192	242	-

Coefficient of performance (C.O.P.)

30	0.96	1.15	1.37	1.62	1.91	2.23	2.60	3.00	-
35	0.81	0.99	1.19	1.41	1.65	1.93	2.23	2.57	-
40	-	0.85	1.02	1.22	1.42	1.65	1.91	2.19	-
45	-	0.71	0.87	1.04	1.22	1.41	1.62	1.86	-
50	-	0.58	0.73	0.87	1.02	1.19	1.36	1.56	-
55	-	-	0.59	0.71	0.84	0.98	1.13	1.29	-
60	-	-	-	0.56	0.67	0.78	0.91	1.05	-

Nominal performance at to = -35 °C, tc = 40 °C

Cooling capacity	2 131	W
Power input	2 079	W
Current consumption	4.53	A
Mass flow	81	kg/h
C.O.P.	1.02	

to: Evaporating temperature at dew point

tc: Condensing temperature at dew point

Rating conditions : Superheat = 10 K , Subcooling = 0 K

Pressure switch settings

Maximum HP switch setting	27.7	bar(g)
Minimum LP switch setting	0.1	bar(g)
LP pump down setting	0.1	bar(g)

Sound power data

Sound power level	82.3	dB(A)
With acoustic hood	75.3	dB(A)

Tolerance according EN12900

Datasheet, performance data

Maneurop reciprocating compressor. NTZ108-4

Performance data at 60 Hz, EN 12900 rating conditions, Suction temp. = 20 °C

R404A

Cond. temp. in °C (tc)	Evaporating temperature in °C (to)							
	-45	-40	-35	-30	-25	-20	-15	-10

Cooling capacity in W

30	-	2 306	3 437	4 843	6 553	8 596	11 003	13 802	-
35	-	-	3 127	4 435	6 020	7 912	10 138	12 730	-
40	-	-	2 788	3 997	5 454	7 190	9 234	11 615	-
45	-	-	-	3 530	4 858	6 436	8 295	10 463	-
50	-	-	-	-	4 236	5 653	7 323	9 276	-
55	-	-	-	-	-	4 846	6 325	8 058	-
60	-	-	-	-	-	4 017	5 303	6 815	-

Power input in W

30	-	2 100	2 492	2 908	3 334	3 758	4 164	4 539	-
35	-	-	2 528	2 990	3 476	3 972	4 464	4 939	-
40	-	-	2 530	3 031	3 568	4 129	4 700	5 266	-
45	-	-	-	3 036	3 618	4 236	4 876	5 526	-
50	-	-	-	-	3 630	4 297	5 000	5 725	-
55	-	-	-	-	-	4 318	5 076	5 869	-
60	-	-	-	-	-	4 307	5 111	5 964	-

Current consumption in A

30	-	4.02	4.48	4.94	5.43	5.93	6.45	7.00	-
35	-	-	4.50	5.01	5.55	6.12	6.74	7.40	-
40	-	-	4.50	5.05	5.65	6.29	7.00	7.76	-
45	-	-	-	5.05	5.71	6.43	7.22	8.09	-
50	-	-	-	-	5.72	6.52	7.40	8.38	-
55	-	-	-	-	-	6.56	7.53	8.61	-
60	-	-	-	-	-	6.54	7.60	8.79	-

Mass flow in kg/h

30	-	56	83	117	159	210	272	344	-
35	-	-	80	113	155	205	265	336	-
40	-	-	75	109	149	198	256	325	-
45	-	-	-	102	142	189	246	313	-
50	-	-	-	-	133	180	235	300	-
55	-	-	-	-	-	168	221	284	-
60	-	-	-	-	-	155	206	267	-

Coefficient of performance (C.O.P.)

30	-	1.10	1.38	1.67	1.97	2.29	2.64	3.04	-
35	-	-	1.24	1.48	1.73	1.99	2.27	2.58	-
40	-	-	1.10	1.32	1.53	1.74	1.96	2.21	-
45	-	-	-	1.16	1.34	1.52	1.70	1.89	-
50	-	-	-	-	1.17	1.32	1.46	1.62	-
55	-	-	-	-	-	1.12	1.25	1.37	-
60	-	-	-	-	-	0.93	1.04	1.14	-

Nominal performance at to = -35 °C, tc = 40 °C

Cooling capacity	2 788	W
Power input	2 530	W
Current consumption	4.50	A
Mass flow	75	kg/h
C.O.P.	1.10	

Pressure switch settings

Maximum HP switch setting	27.7	bar(g)
Minimum LP switch setting	0.1	bar(g)
LP pump down setting	0.1	bar(g)

Sound power data

Sound power level	82.3	dB(A)
With acoustic hood	75	dB(A)

to: Evaporating temperature at dew point

tc: Condensing temperature at dew point

Rating conditions : Suction gas temp. = 20 °C , Subcooling = 0 K

Tolerance according EN12900

Performance data at 60 Hz, EN 12900 rating conditions, Superheat = 10 K
R404A

Cond. temp. in °C (tc)	Evaporating temperature in °C (to)							
	-45	-40	-35	-30	-25	-20	-15	-10

Cooling capacity in W

30	1 246	2 051	3 100	4 429	6 074	8 072	10 463	13 282	-
35	1 046	1 797	2 766	3 987	5 498	7 335	9 538	12 146	-
40	-	1 525	2 410	3 520	4 893	6 567	8 580	10 972	-
45	-	1 241	2 038	3 035	4 267	5 773	7 592	9 765	-
50	-	951	1 657	2 536	3 624	4 959	6 581	8 530	-
55	-	-	1 273	2 031	2 972	4 132	5 551	7 273	-
60	-	-	-	1 527	2 315	3 296	4 509	5 997	-

Power input in W

30	1 746	2 100	2 492	2 908	3 334	3 758	4 164	4 539	-
35	1 730	2 103	2 528	2 990	3 476	3 972	4 464	4 939	-
40	-	2 081	2 530	3 031	3 568	4 129	4 700	5 266	-
45	-	2 038	2 505	3 036	3 618	4 236	4 876	5 526	-
50	-	1 982	2 459	3 012	3 630	4 297	5 000	5 725	-
55	-	-	2 397	2 965	3 610	4 318	5 076	5 869	-
60	-	-	-	2 900	3 565	4 307	5 111	5 964	-

Current consumption in A

30	3.57	4.02	4.48	4.94	5.43	5.93	6.45	7.00	-
35	3.57	4.02	4.50	5.01	5.55	6.12	6.74	7.40	-
40	-	4.00	4.50	5.05	5.65	6.29	7.00	7.76	-
45	-	3.94	4.47	5.05	5.71	6.43	7.22	8.09	-
50	-	3.84	4.39	5.01	5.72	6.52	7.40	8.38	-
55	-	-	4.26	4.93	5.69	6.56	7.53	8.61	-
60	-	-	-	4.78	5.60	6.54	7.60	8.79	-

Mass flow in kg/h

30	43	69	101	139	186	241	306	380	-
35	39	65	97	135	181	235	298	370	-
40	-	60	92	129	174	227	289	359	-
45	-	54	85	122	166	218	277	346	-
50	-	46	77	113	156	206	264	331	-
55	-	-	67	103	144	193	249	314	-
60	-	-	-	90	131	178	232	295	-

Coefficient of performance (C.O.P.)

30	0.71	0.98	1.24	1.52	1.82	2.15	2.51	2.93	-
35	0.60	0.85	1.09	1.33	1.58	1.85	2.14	2.46	-
40	-	0.73	0.95	1.16	1.37	1.59	1.83	2.08	-
45	-	0.61	0.81	1.00	1.18	1.36	1.56	1.77	-
50	-	0.48	0.67	0.84	1.00	1.15	1.32	1.49	-
55	-	-	0.53	0.69	0.82	0.96	1.09	1.24	-
60	-	-	-	0.53	0.65	0.77	0.88	1.01	-

Nominal performance at to = -35 °C, tc = 40 °C

Cooling capacity	2 410	W
Power input	2 530	W
Current consumption	4.50	A
Mass flow	92	kg/h
C.O.P.	0.95	

to: Evaporating temperature at dew point

tc: Condensing temperature at dew point

Rating conditions : Superheat = 10 K , Subcooling = 0 K

Pressure switch settings

Maximum HP switch setting	27.7	bar(g)
Minimum LP switch setting	0.1	bar(g)
LP pump down setting	0.1	bar(g)

Sound power data

Sound power level	82.3	dB(A)
With acoustic hood	75	dB(A)

Tolerance according EN12900